

# Rotary Screw Vacuum Packages

ASV, BSV, CSV

Capacities from 168 to 555 acfm



## Superior Quality

The Kaeser Rotary Screw Vacuum Package features the proprietary Sigma Profile airend and the patent-pending Sigma Control System, designed and engineered to provide optimum efficiency and lower energy costs for the life of the equipment. Maximum vacuum is 99.9%.

## Efficient Design

Kaeser vacuum packages feature a solid steel floor with anti-vibration mounts eliminating the need for special foundations. A powder-coated, sound-dampening enclosure is standard on all models ensuring low noise levels. The enclosure has wide-opening doors and removable panels providing easy access to all maintenance points. These units include replaceable, cleanable cabinet pre-filter mats to prevent particles larger than 40 microns from entering the enclosure.

Kaeser vacuum packages are completely piped and wired and ready for installation. These units meet or exceed NFPA 99C guidelines for use in hospital installations.

## Applications

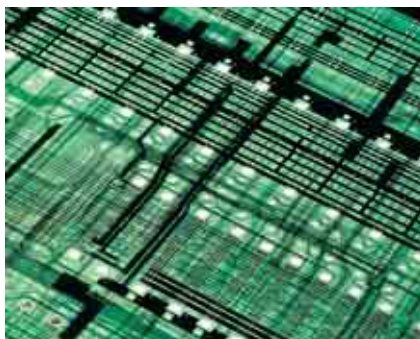
These units are perfectly suited for various healthcare and pharmaceutical applications. Electronics manufacturing and printing presses also count on Kaeser systems for a reliable source of efficient vacuum.



Pharmaceutical



Medical



Electronics



Printing

# Standard Features

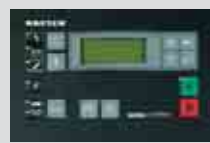


## 1 Vacuum Aired

The rotary screw vacuum air end with Sigma Profile has oversized bearings to ensure long service life. The pneumatic inlet valve is activated by a solenoid control valve and full-flow/idle switching is controlled by an adjustable vacuum switch. A full-flow positive displacement lubricant pump is driven by the female rotor for proper lubrication at all vacuum levels.



## 2 Sigma Control™



The Sigma Control™ system is a PC-based control system with Intel® processor that monitors all control functions and maintenance items. Switchable dual / modulation control offers maximum flexibility to meet changing demands or applications.

## 3 Motor and Starter



A TEFC electric motor is EPAct compliant and features class F insulation and a 1.15 service factor. This type of motor ensures efficient operation. 230/460 or 575V, 3-Phase, 60 Hz is standard. Other voltages are available.

Units come complete with a full-voltage magnetic starter and 115-1-60 control voltage transformer.

## Additional Features



Kaeser's Sigma Rotary Screw Vacuum Package is completely piped and wired.

On BSV/CSV the externally mounted vacuum filter for the suction line is equipped with a pressure differential system to signal contamination and enable you to schedule needed maintenance.

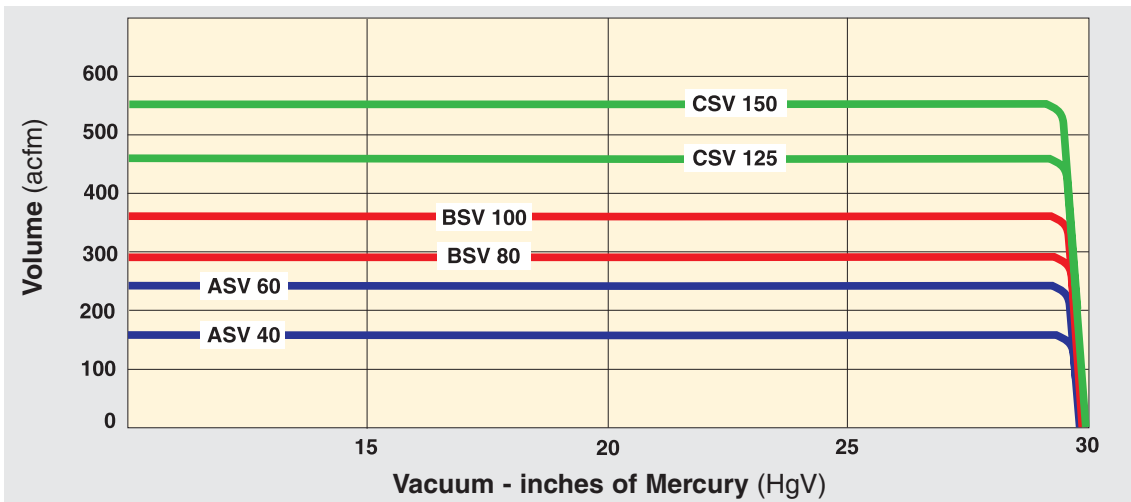
## 4 Air/coolant system

Kaeser's Rotary Screw Vacuum Package is equipped with an air-cooled cooler. A package cooling fan is mounted on the motor drive shaft. The combination valve features a thermostatic element and full-flow micro fluid filter with spin-on replacement cartridge as one integrated unit. The package has a combined reservoir and separator tank complete with safety relief valve

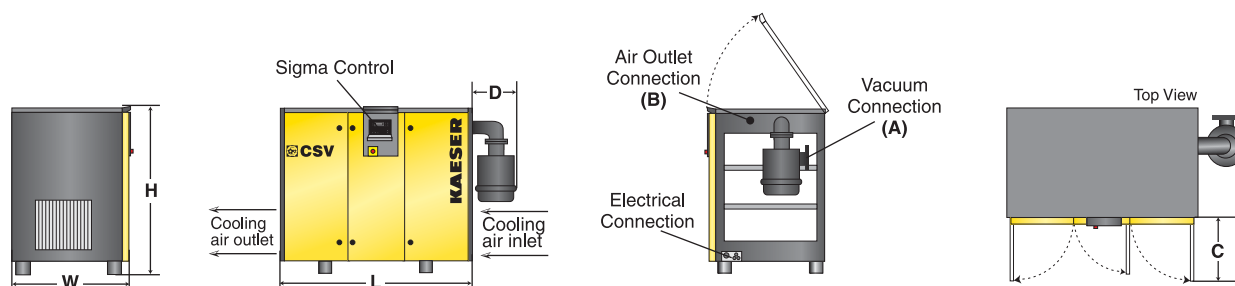
and a multistage oversized separator cartridge. It also features two fluid level sight glasses, a drain valve and drain hose for quick and easy fluid changes. Two quick disconnect fittings make manual verification of differential pressure across the separator cartridge convenient. The package is shipped complete with an initial charge of synthetic fluid. Discharge can be easily piped away from unit due to an external connection on the package enclosure.



## Performance curves\* ASV - BSV - CSV



\*Data on the curves is based on 29.92" Hg absolute discharge pressure, inlet air temperature of 68°F, and 60 Hz electric motor operation.



Model	Capacity (acfm)	Max. Vacuum (%)	Rated Power (hp)	Electrics	Overall Dimensions L x W x H (in.)	Standard Unit Connections (in.)		Dimensions (in.)		Weight (lb.)
						A	B	C	D	
ASV 40	168	>99.9	10	230/460 V - 3ph - 60 Hz	55¾ x 34½ x 42½	2½ flg.	1½ NPT	19-1/8	11	1,015
ASV 60	242		15							1,080
BSV 80	296	>99.9	20	230/460 V - 3ph - 60 Hz	63¾ x 39 x 54½	4 NPT	2 NPT	21¼	18¼	1,630
BSV 100	367		25							1,665
CSV 125	463	>99.9	30	230/460 V - 3ph - 60 Hz	76¾ x 48 x 57¼	4 flg.	3 NPT	28	14¼	3,060
CSV 150	555		40							3,350

Dimensional drawings are available upon request. All units are available in 575V.

Specifications are subject to change without notice.

# KAESER COMPRESSORS

**Built for a lifetime.™**

Corporate Headquarters:

P.O. Box 946

Fredericksburg, Virginia 22404

Phone 540-898-5500

Fax 540-898-5520

www.kaeser.com

Certified Management Systems



## The Air Systems Specialist

With over 80 years of experience, Kaeser is the air systems specialist. Our extensive 100,000 square foot facility allows us to provide unequalled product availability. With service centers nationwide and our 24-hour emergency parts guarantee, Kaeser customers can rely on the best after-sales support in the industry. Kaeser stands committed to providing the highest quality air system for your specific compressed air needs.